



- [Home](#)
- [Foam Jacking Risks](#)
- [About Us](#)
- [Services](#)
 - [Mudjacking/Slabjacking](#)
 - [Compaction Grouting](#)
 - [Compression Pile Underpinning System](#)
 - [Shotcrete/Gunite](#)
 - [Liquid Backfill](#)
 - [Liquid Topsoil](#)
 - [Clay Spray](#)
 - [Concrete Pumping](#)
 - [Grain Bin Leveling and Stabilization](#)
 - [Foundation Repair](#)
 - [Landscaping](#)
- [Contact/Estimate Request](#)



- [Home](#)
- [Foam Jacking Risks](#)
- [About Us](#)
- [Services](#)
 - [Mudjacking/Slabjacking](#)
 - [Compaction Grouting](#)
 - [Compression Pile Underpinning System](#)
 - [Shotcrete/Gunite](#)
 - [Liquid Backfill](#)

- [Liquid Topsoil](#)
- [Clay Spray](#)
- [Concrete Pumping](#)
- [Grain Bin Leveling and Stabilization](#)
- [Foundation Repair](#)
- [Landscaping](#)
- [Contact/Estimate Request](#)

Shotcrete/Gunite

Shotcrete/Gunite

[Print Page](#)

SERVICE:

Shotcrete & Gunite Repair Application

Associated Processes: Settled Concrete, Sunken Concrete, Concrete Raising, Slope Stabilization, Shotcrete Foundations, Grading Contractors, BackFill Contractors, Liquid Backfill Contractors, Home Builders, Consultants, Screw Piles, Compression Piles, Foundation Underpinning, Foam Jacking

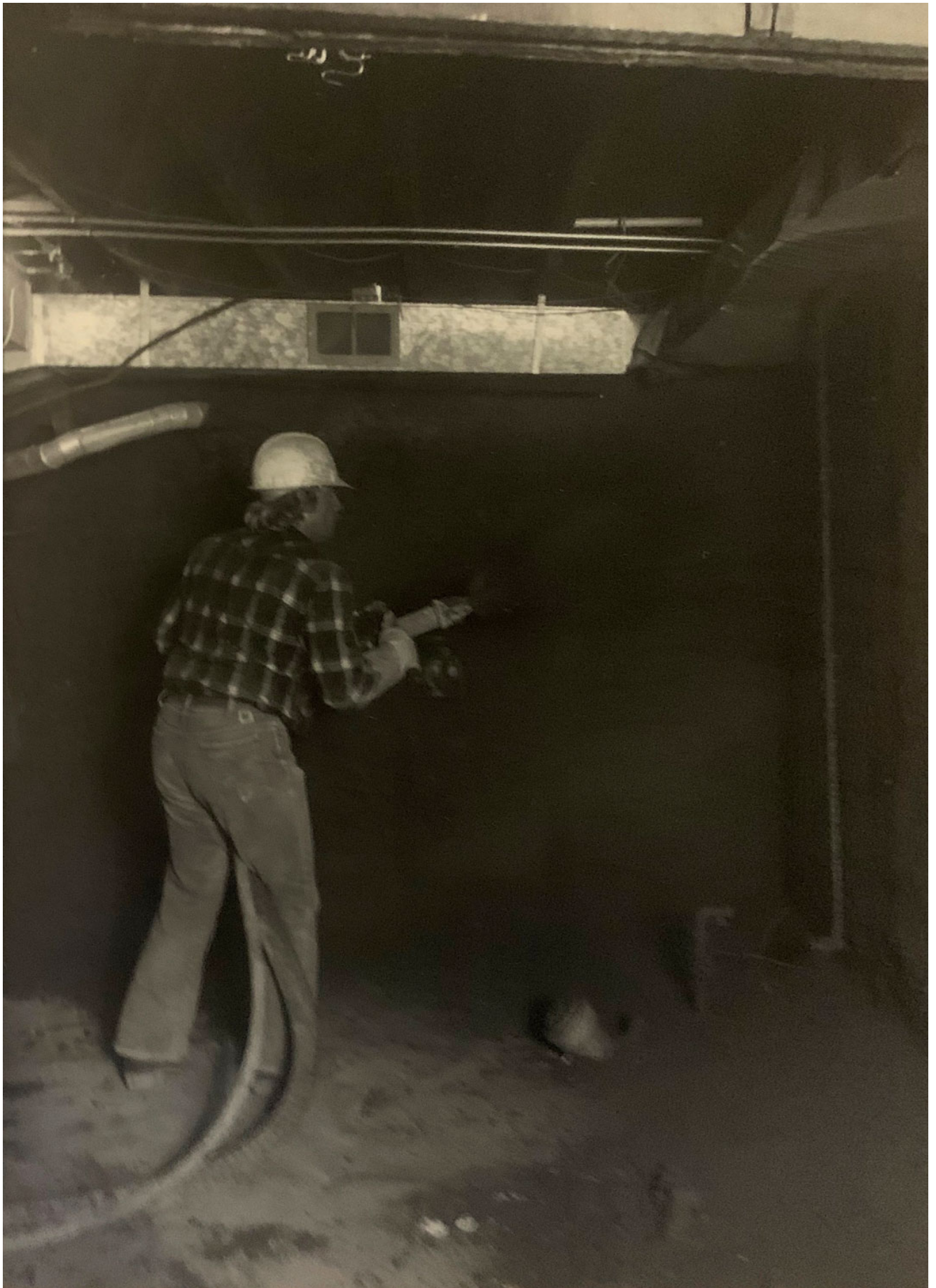
Shotcrete is a structurally engineered pneumatically sprayed concrete used to repair deteriorating concrete foundations and structures. In addition, it can be used to restructure concrete slope stabilization, make new swimming pools and prevent water erosion control, plus many other applications.

Shotcrete benefits:

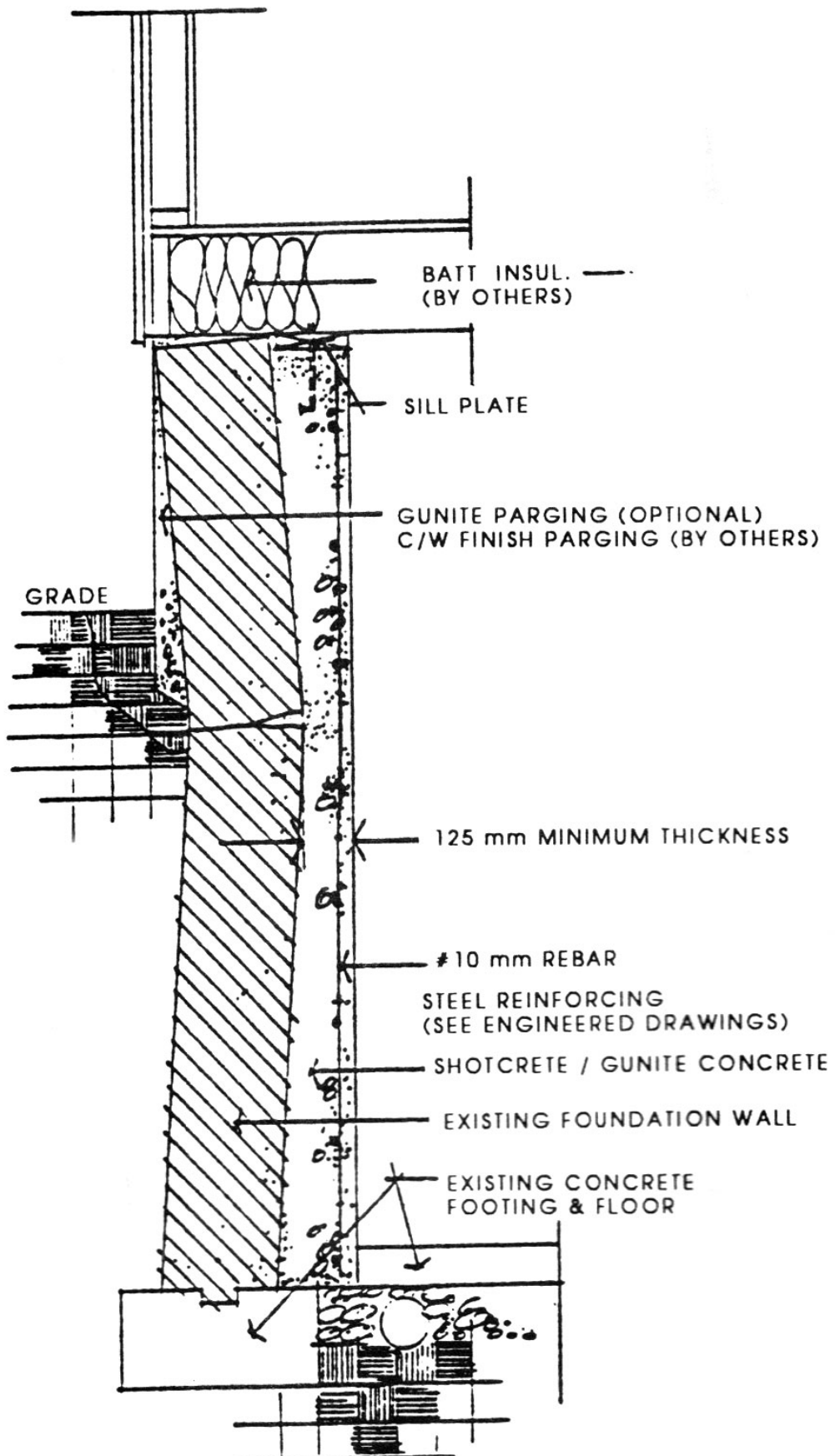
- 100% re-structured with Gunitite.
- Local engineers prepare structural drawings and do site inspections which guarantee the work's structural integrity
- Gunitite (sprayed concrete) compacts and builds upon itself, embedding steel reinforcement as it adheres to the existing wall or back-stop form.
- The compacting action of the application produces a very dense, high-strength concrete wall, with improved waterproofing qualities.
- Due to application impact, concrete is forced into the existing walls cracks, and irregularities, creating a permanent bond to an existing surface.
- The resulting foundation wall is structurally superior to new foundation walls, at much less than the cost of replacement walls, which are typically 3 times stronger.
- Work can generally be completed within 2 weeks and in any season of the year, with little disturbance to the occupants.
- Older homes and commercial buildings can be remediated economically (better than new)











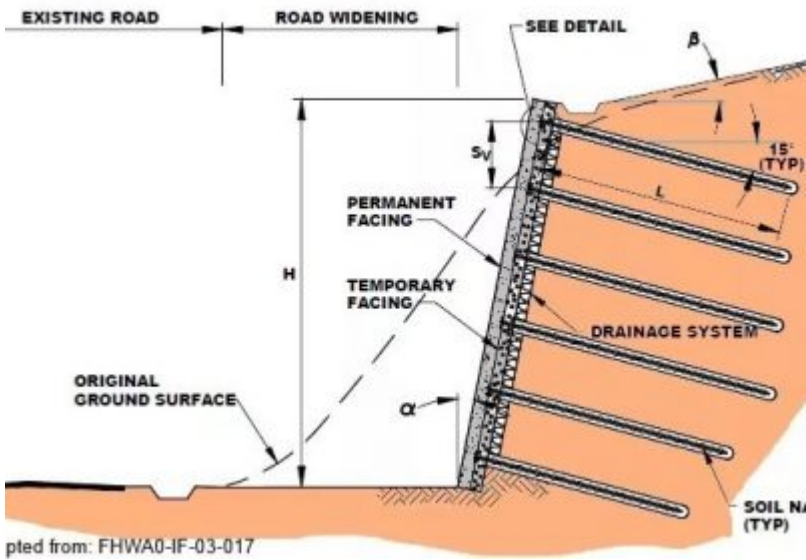
TYPICAL FOUNDATION REPAIR

[Contact Us For Free Quote](#)

Shotcrete







Shotcrete Slope Stabilization



Flin Flon Coal Storage Silo



Pasqua Hospital Trimming Cut Off Walls



Travelodge Waterslide Mountain





Flin Flon Trout Lake Mine Rock Stabilization





Explosion Test Site – Caronport, SK



Associated Processes: Settled Concrete, Sunken Concrete, Concrete Raising, Slope Stabilization, Shotcrete Foundations, Grading Contractors, BackFill Contractors, Liquid Backfill Contractors, Home Builders, Consultants, Screw Piles, Compression Piles, Foundation Underpinning, Foam Jacking



Residential • Commercial • Industrial

Serving the Prairie Provinces

Contact Us

Gunner LiftCrete Corp.

682 Adams Street

Regina, Saskatchewan

S4N 6R8

Phone: [\(306\) 775-2626](tel:3067752626)

Email: gunner@accesscomm.ca

Services Include

[Mudjacking/Slabjacking:](#)

Raising settled concrete slabs

[Compaction Grouting:](#)

Raising settled foundations

[Compression Pile Underpinning System:](#)

Raising settled foundations

[Shotcrete & Guniting Repair Application](#)

[Liquid Backfill:](#)

Raising settled grades & cavity fill

Liquid Topsoil:

Finishing grading

Clay Spray:

Slope, stabilization and fill

Concrete Pumping:

Placing concrete into forms



- [Home](#)
- [About Us](#)
- [Services](#)
 - [Mudjacking/Slabjacking](#)
 - [Foundation Repair](#)
 - [Shotcrete/Gunite](#)
 - [Landscaping](#)
 - [Concrete Pumping](#)
- [Contact/Estimate Request](#)
- [Privacy Policy](#)

Services Include

Mudjacking/Slabjacking:

Raising settled concrete slabs

Compaction Grouting:

Raising settled foundations

Compression Pile Underpinning System:

Raising settled foundations

Shotcrete & Gunite Repair Application

Liquid Backfill:

Raising settled grades & cavity fill

Liquid Topsoil:

Finishing grading

Clay Spray:

Slope, stabilization and fill

Concrete Pumping:

Placing concrete into forms

- [Home](#)
- [About Us](#)
- [Services](#)
 - [Mudjacking/Slabjacking](#)
 - [Foundation Repair](#)
 - [Shotcrete/Gunite](#)
 - [Landscaping](#)
 - [Concrete Pumping](#)
- [Contact/Estimate Request](#)
- [Privacy Policy](#)



© 2025 Copyright